

Y | Community Consultation

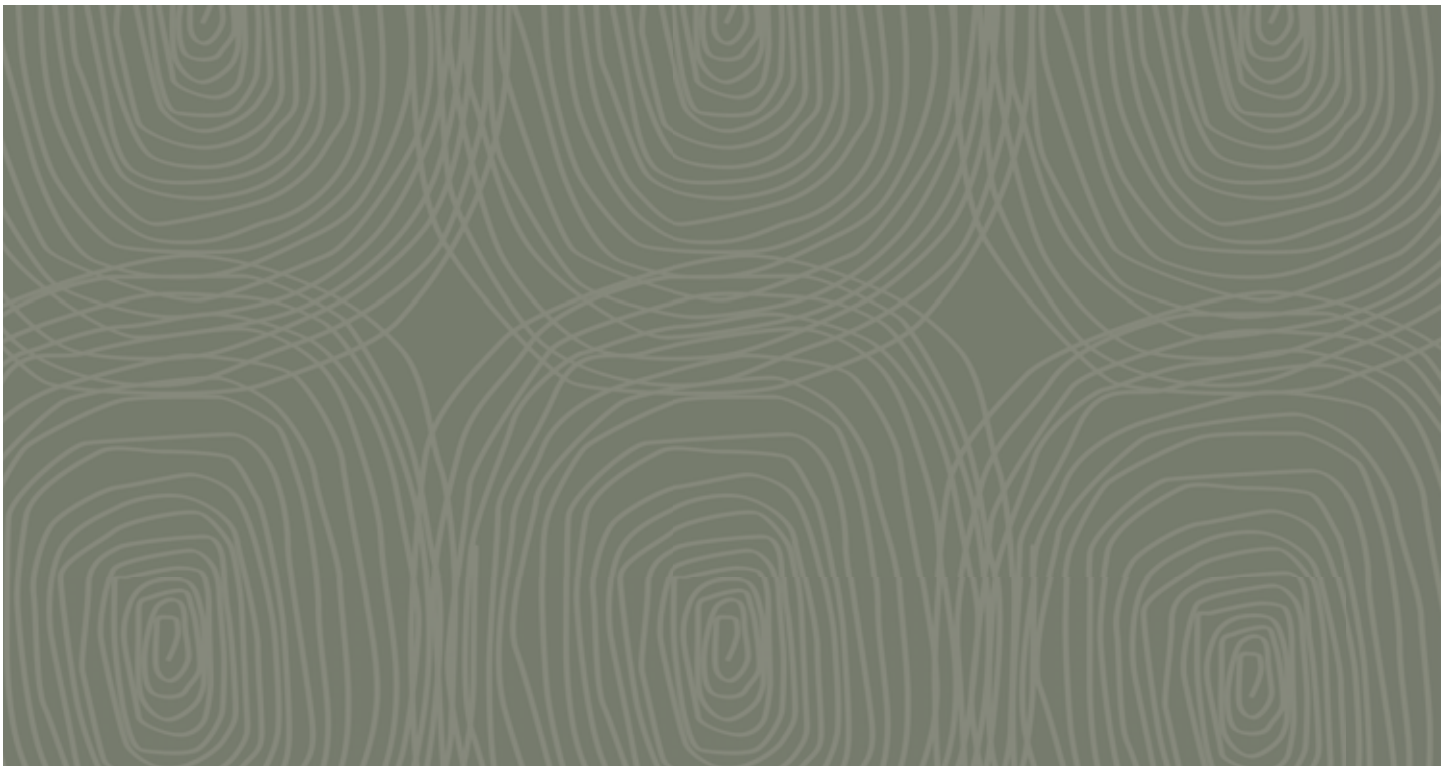




Table of Contents

Appendix Y Community Consultation.....	Y-1
<i>Y.1 Introduction</i>	<i>Y-1</i>
Y.1.1 Background.....	Y-1
Y.1.2 Purpose	Y-1
Y.1.3 Requirements.....	Y-1
Y.1.4 Project Overview	Y-2
Y.1.5 Strategy	Y-3
Y.1.6 Consultation Team	Y-4
<i>Y.2 Public Consultation Activities</i>	<i>Y-5</i>
Y.2.1 Overview.....	Y-5
Y.2.2 Community Information Sessions	Y-6
Y.2.3 Meetings with Regional Councils	Y-6
Y.2.4 Regional Shows	Y-6
Y.2.5 Targeted Consultations	Y-7
Y.2.5.1 HGPL Consultations with Landholders.....	Y-7
Y.2.5.2 Native Title Claim Group Consultations.....	Y-7
Y.2.5.3 Consultations with Emergency Service Providers.....	Y-7
Y.2.5.4 Consultations with other local stakeholders.....	Y-8
Y.2.5.5 Other Consultations.....	Y-8
Y.2.6 1300 Telephone Number.....	Y-9
Y.2.7 HPPL Project Website.....	Y-9
Y.2.8 Project Factsheets, Community Updates and Questionnaires	Y-9
Y.2.9 Databases.....	Y-9
<i>Y.3 Results of Consultation Activities</i>	<i>Y-10</i>
Y.3.1 Community Information Sessions	Y-10
Y.3.1.1 Alpha	Y-10
Y.3.1.2 Clermont	Y-12
Y.3.1.3 Emerald	Y-13
Y.3.1.4 Feedback on the Community Information Sessions.....	Y-13
Y.3.2 Meetings with Regional Councils	Y-14
Y.3.2.1 Barcaldine Regional Council.....	Y-14
Y.3.2.2 Isaac Regional Council.....	Y-17
Y.3.2.3 Central Highlands Regional Council.....	Y-18
Y.3.3 Regional Shows	Y-18
Y.3.3.1 Alpha Regional Show	Y-18
Y.3.3.2 Clermont Regional Show.....	Y-19
Y.3.4 Targeted consultations	Y-20
Y.3.4.1 Targeted consultations with other local stakeholders	Y-20
Y.3.5 Questionnaires.....	Y-21
<i>Y.4 Summary of Results</i>	<i>Y-24</i>
Y.4.1 Overview.....	Y-24

Y.4.2	Results.....	Y-24
Y.4.3	Incorporation of Results.....	Y-25
Y.5	<i>Ongoing Activities</i>	Y-26
Y.5.1	Consultation Activities	Y-26
Y.5.2	Community Liaison.....	Y-26
Y.5.3	Kevin's Corner Consultative Committee.....	Y-27
Y.5.3.1	<i>Draft Terms of Reference for the KCCC</i>	Y-29
Y.5.3.2	<i>Purpose</i>	Y-29
Y.5.3.3	<i>Objective</i>	Y-29
Y.5.3.4	<i>Responsibilities</i>	Y-29
Y.5.3.5	<i>Timing</i>	Y-30
Y.5.3.6	<i>Actions</i>	Y-30

Tables

Table Y-1	Summary of community consultation and Social Impact Assessment (SIA) stakeholder engagement activities	Y-5
Table Y-2	Issues raised at the Alpha Community Information Session.....	Y-11
Table Y-3	Issues raised at the Clermont Community Information Session related to mine component Y-12	
Table Y-4	Issues raised at the Emerald Community Information Session.....	Y-13
Table Y-5	Issues raised by the Barcaldine Regional Council.....	Y-14
Table Y-6	Issues raised by the Isaac Regional Council.....	Y-17
Table Y-7	Issues raised by the Central Highlands Regional Council (Emerald)	Y-18
Table Y-8	Summary of results per district as expressed by stakeholders	Y-25

Figures

Figure Y-1	Alpha Community Information Session.....	Y-11
Figure Y-2	Stand at the Alpha Regional Show	Y-19
Figure Y-3	Stand at the Clermont Regional Show.....	Y-20
Figure Y-4	Areas of stakeholder concern identified in the questionnaire.....	Y-23
Figure Y-5	Kevin's Corner Consultative Committee Structure	Y-28

Appendices

Appendix A	– HPPL Community Information Session Advertisements
Appendix B	– HPPL Webpage Snapshot
Appendix C	– Alpha and Kevin's Corner Fact Sheets
Appendix D	– HPPL Community Updates
Appendix E	– HPPL Questionnaire



Glossary, Abbreviations and Units

Abbreviation	Definition
AARC	Australasian Resource Consultants
BIBO	Bus in, bus out
BRC	Barcaldine Regional Council
CHRC	Central Highlands Regional Council
DIDO	Drive in, drive out
EIS	Environmental Impact Statement
EM Plan	Environmental Management Plan
FIFO	Fly in, fly out
GHD	Gutteridge, Haskins and Davey
HCC	Hancock Consultative Committee for Galilee Basin
HCPL	Hancock Coal Pty Ltd
HGPL	Hancock Galilee Pty Ltd
IRC	Isaac Regional Council
KCCC	Kevin's Corner Consultative Committee
km	Kilometre
LOM	Life of Mine
SIA	Social Impact Assessment
SIMP	Social Impact Management Plan
TLO	Train load out



Appendix Y Community Consultation

Y.1 Introduction

Y.1.1 Background

The Public Consultation Process was developed and implemented in compliance with Part A, Section 7 of the Terms of Reference (TOR) for the Kevin's Corner Coal Project (the Project) Environmental Impact Statement (EIS), and in the context of the broader project consultation process undertaken by Hancock Galilee Pty Ltd (HGPL) (the Proponent).

This report focuses on Part B, Section 1.8 of the Kevin's Corner Coal Project TOR, "Public consultation process". It provides an overview and key findings of the Public Consultation Process for the Kevin's Corner Coal Project (the Project) EIS process.

It is noted that the early phases of the public consultation process for the Project were carried out in conjunction with the public consultation process for the Alpha Coal Project. This was because the proponents for these two projects (HGPL for the Project, and Hancock Coal Pty Ltd [HCPL] for the Alpha Coal Project) are both subsidiaries of GVK Coal Developers (Singapore) Pte Limited (GVKCDPL) (see Section 21.1.5 of this report). Other contributing factors were the similarities in location, timing and nature of the two projects, as well as the reliance of the Project on infrastructure to be delivered as part of the Alpha Coal Project (Rail).

Y.1.2 Purpose

The purpose of the Public Consultation Process for the EIS was to provide information on the Kevin's Corner Coal Project and provide opportunities for the community to participate in the EIS process for the Project. More specifically, the Public Consultation Process aimed to:

- Identify the different opinions of various interest groups about the Project;
- Explain the EIS methodology and how the public can provide input into the EIS;
- Provide an understanding of the regulatory approval process; and
- Seek local information and feed into the Project decision making processes.

Consultations for the Social Impact Assessment (SIA) were integrated with the Public Consultation Process and have been reported in the SIA Report (see Volume 2, Appendix T).

Y.1.3 Requirements

According to the TOR the key objectives of the consultation program are:

- Inform the different interest groups about the project proposal;
- Seek an understanding of interest group concerns about the Project;
- Explain the impact assessment research methodology and how public input might influence the final recommendations for the Project;
- Provide an understanding of the regulatory approval process; and



- Seek local information and input into the Project.

A consultation plan shall be prepared during the initial phase of the EIS process. This should identify:

- The types of activities to be undertaken;
- Timing;
- Targeting the stakeholder/community representatives;
- Integration with other EIS activities and the Project development process;
- Consultation responsibilities;
- Communication protocols; and
- Reporting and feedback arrangements.

Any Indigenous component of the public consultation program shall be guided by engagement that:

- Is geographically specific;
- Uses appropriate language and media; and
- Takes into account the communication skill level of participants.

This section shall outline the methodology adopted to:

- Identify stakeholders and how their involvement was facilitated;
- Identify the process conducted to date and future consultation strategies and programs, including during the operational phase of the Project; and
- Indicate how consultation involvement and outcomes were integrated into the EIS process and future site activities, including opportunities for engagement and provision for feedback and action if necessary.

Detailed results of the consultation process shall be provided as a consultation report and presented as an appendix to the EIS. A summary of the key processes and outcomes should be provided in this section.

This report has been compiled to detail how the listed TOR requirements have been satisfied for this EIS.

Y.1.4 Project Overview

The proposed Project aims to develop a 30 million tonnes per annum (Mtpa) product open-cut and underground thermal coal mine to target the coal seams in the Galilee Basin, Queensland, Australia. The coal mine will be supported by the privately owned and operated rail and port infrastructure facilities developed for the Alpha Coal Mine. At the Project site, coal will be mined, washed and conveyed to a train load-out (TLO) facility where it will be transported to the east coast of Australia to the port facility at Abbot Point for export.

The mine component of the Project will require a construction workforce of ~1,800 at peak and ~1,500 operational jobs per year for the Life of Mine (LOM), scheduled across a 30 year span. The Project will also create flow-on (indirect) employment opportunities for the region.



The Project will accommodate the majority of the construction and operational workforce in an on-site accommodation village within the Project boundary. The workforce is anticipated to be predominantly fly in, fly out (FIFO) due to the location and distances to population centres capable of accommodating such a large workforce. The Project will also have drive in, drive out (DIDO) opportunities for some local residents, and bus in, bus out (BIBO) opportunities from key regional centres. FIFO workers will be collected from key regional centres throughout Queensland, based on workforce sourcing realities at the time, and flown to the on-site aerodrome for their work rotations. HGPL prefers to hire locally and regionally but has designed a mainly FIFO project with on-site accommodation in anticipation of the high likelihood workers will need to be sourced outside the region.

The regional study area includes Isaac Regional Council (closest community to the mine is Clermont), and Central Highlands Regional Council (closest service centre to the mine is Emerald). The local study area includes Barcaldine Regional Council with the closest community to the mine being Alpha. Regional centres include communities like Brisbane, Rockhampton, Mackay, Townsville and Cairns; however, these regional centres have not been determined for the Project. Potential FIFO airports will be identified based on workforce numbers from various regions throughout Queensland, and possibly Australia as a whole.

Potential social impacts during the construction and operational stages of the Project could affect the following key social areas:

- History and settlement;
- Demographic;
- Culture and community dynamics;
- Housing and Accommodation;
- Health, wellbeing and social infrastructure;
- Education and training;
- Labour market and employment;
- Industry and business;
- Income and cost of living;
- Governance; and
- Primary industry and access.

For more information on the description of the Kevin's Corner Coal Project refer to Volume 1, Section 2 of the EIS.

Y.1.5 Strategy

The HGPL Corporate Plan is the overarching document guiding HGPL's activities into the future, including its approaches to public consultation generally. More specifically, a draft Public Consultation Strategy encompassing consultation for the EIS processes for both the Kevin's Corner and Alpha Coal (mine) Projects was developed based on a scoping exercise to identify potential stakeholders. The draft Public Consultation Strategy was provided to HPPL for approval prior to any public consultation



activities being undertaken. The Public Consultation Strategy responded to the requirements of the TOR (refer to Section 21.1.3 of this report).

Particularly in the early phases of consultation, the Public Consultation Process for the Kevin's Corner Project EIS was carried out in conjunction with the Public Consultation Process for the Alpha Coal Project EIS. This was because:

- HPPL is the parent company of both HGPL (Kevin's Corner) and HCPL (Alpha);
- The similarities in purpose, proximity and timing of the Projects; and
- The reliance of the Kevin's Corner Project on infrastructure to be delivered with the Alpha Coal Project (i.e. the rail infrastructure).

The consultation activities that were subject to this combined approach included the public events (i.e. the Regional Shows and the Community Information Sessions) and the earlier meetings with councils (up to and including the meetings in May 2010). As such, for these combined consultation activities, the Proponent is referred to as Hancock Galilee Pty Ltd (HGPL). From May 2010 onwards, however, consultations for the two projects were deliberately separated, and scheduled consultation activities focussed on discussion of either one project or the other. This approach was employed to avoid confusion amongst stakeholders about the two projects, and to focus discussions on one project at a time. In effect, consultations for the Kevin's Corner Project were put on hold until after the submission of the Alpha Coal (mine) EIS. As such, for these later stage consultations that were undertaken in relation to only the Kevin's Corner Coal Project, the Proponent is referred to as Hancock Galilee Pty Ltd (HGPL).

- The Proponent also conducted independent consultations outside of the EIS process to:
- Maintain relationships with stakeholders;
- Inform stakeholders about the Proponent and the proposed Project;
- Provide an understanding of the regulatory approvals process;
- Provide a heightened level of consultation to landholders within the mining lease area; and
- Negotiate with directly impacted landholders within the mining lease area.

These consultations are ongoing. It is important to note that these consultations with landholders within the mining lease area were not included in the EIS and SIA because the nature of the discussions was confidential. The Proponent employed local land managers to reduce the impact of consultation fatigue and frustration for local landholders. This aligned with the overall Project strategy to conduct stakeholder engagement in a way that provided a mutually beneficial outcome for the stakeholder and the Project wherever possible.

Y.1.6 Consultation Team

Given that in the early phases, consultation activities for the Alpha and Kevin's Corner Projects were combined (see Section 21.1.5), the consultation team included a number of different consultants, as well as the HPPL/HGPL consultation team, as follows:

- For the Alpha Coal Project, two Environmental Impact Statements (EIS) were required – one for the mine component and one for the rail component. As such, HPPL contracted Australasian Resource Consultants (AARC) and URS to undertake the EIS for the mine component of the



Project, and Gutteridge, Haskins and Davey (GHD) to undertake the EIS for the rail component. For the Alpha Coal Project, some elements of the consultation activities for the mine and the rail components were undertaken together, again it was particularly the public events.

- For the Kevin's Corner Project, HGPL contracted URS to undertake the EIS.

Given that some of the consultation activities for the Alpha and Kevin's Corner Projects were combined, the consultation teams from these various consultancies as well as the HPPL/HGPL consultation team worked in collaboration. This ensured that consultation activities were maximised to limit the potential for consultation fatigue. This was of particular concern in consideration of the other proposed projects in the Galilee Basin, and the limited experience in the Barcaldine Regional Council (BRC) region with large project consultation in particular.

Y.2 Public Consultation Activities

Y.2.1 Overview

Table Y-1 provides a summary of the key stakeholder engagement activities undertaken for the EIS.

Table Y-1 Summary of community consultation and Social Impact Assessment (SIA) stakeholder engagement activities

Event	Timing
Community Information Sessions	
Alpha	Tuesday 4 May 2010
Clermont	Wednesday 5 May 2010
Collinsville	Thursday 6 May 2010
Emerald	Thursday 6 May 2010
Barcaldine	Friday 7 May 2010
Bowen	Friday 7 May 2010
SIA Stakeholder Consultations – Meetings with Regional Councils	
Barcaldine Regional Council	Tuesday 4 May 2010
	Tuesday 8 March 2011
	Monday 4 April – Tuesday 5 April 2011
Isaac Regional Council	Wednesday 5 May 2010
Central Highlands Regional Council	Friday 6 May 2010
	Thursday 10 March 2011
Regional Shows	
Alpha Show – staffed display	19 May 2010
Clermont Show – staffed display	26 May 2010
Targeted Consultations	
Including - Barcaldine Hospital; local businesses in Alpha and Jericho; Central Highlands Development Corporation	Tuesday 8 March – Thursday 10 March 2011



Y.2.2 Community Information Sessions

Community information sessions were held in Alpha, Clermont, Emerald, Barcaldine, Collinsville, and Bowen. Each of the regional councils (Barcaldine, Isaac and Central Highlands) was consulted about potential dates, venues, timings and advertising for these events. Advertisements for the community information sessions were published in the following newspapers:

- Central Queensland News, Wednesday 28 April 2010;
- Bowen Independent, Wednesday 28 April 2010 (main paper) and Friday 30 April 2010 (Collinsville page) (rail component);
- Miners Midweek, Wednesday 28 April 2010; and
- Longreach Leader, Friday 30 April 2010.

Copies of the advertisements are provided in Appendix A. Letters of invitation were also sent to the directly impacted landholders. As described in Section 21.1.5, the Community information sessions encompassed consideration of both the Alpha and Kevin's Corner Coal projects.

The format for the community information sessions was based on a walk through format, where interested members of the public were greeted and directed to a team member who would be best suited to respond to their question or issue. The community information sessions had an open door policy where interested people could enter and leave at their own leisure. Participants in the community information sessions were provided with opportunities to provide their feedback on the Projects verbally (and notes taken by the Consultation Team members) or in writing using the feedback forms and questionnaires.

Y.2.3 Meetings with Regional Councils

Meetings with Barcaldine, Isaac and Central Highlands regional councils (Mayors, Councillors and/or bureaucratic staff) were organised to gain an understanding of the issues currently facing the regions and to identify the potential impact that the Kevin's Corner Project would have. As outlined in Section 21.1.5, in the meetings of, and prior to, May 2010, consideration was also given to impacts in relation to the Alpha Coal (mine) Project.

During the discussions, the Consultation Team members took notes on the issues raised by the regional councils. Councils were asked to clarify gaps and discrepancies in the SIA and encouraged to identify potential impacts that they felt could occur and why. Councils were also informed of the three phase Social Impact Management Plan (SIMP) process being developed for the Project, and that their input and assistance would be required during Phase 2, i.e. between submission of the EIS to State Government and finalisation of the SIMP for implementation (date to be determined).

Y.2.4 Regional Shows

There was an opportunity for HPPL to have staffed displays at the Regional Shows, which were scheduled to occur during the early stages of the EIS process. The Regional Shows are major regional events that attract community members, tourists and local businesses. The Community Information Sessions relied on interested members of the public to attend the sessions, where as the Regional Shows presented the opportunity for the Project (as well as the Alpha Coal Project – see Section 21.1.5) to be part of an existing regional event where people would already be attending.



The purpose of attending the Shows was to gain a wider audience for the EIS process and to seek further input from community members. The Regional Shows in Alpha and Clermont were attended by the Consultation Teams. As in the community information sessions, people who came to the stall at the Regional Shows were provided with opportunities to provide their feedback on the Projects verbally (and notes taken by the Consultation Team members) or in writing using the feedback forms and questionnaires.

Y.2.5 Targeted Consultations

Targeted consultations were also undertaken, primarily to inform certain studies like the SIA.

Y.2.5.1 HGPL Consultations with Landholders

HGPL conducted consultation and negotiations with landholders within the mining lease area as part of their consultation plan. These consultations have been recorded in confidential files to protect the identity and content of these discussions. Landholder discussions with the initial SIA team were recorded separately and are reflected within the SIA, though again, without identification of the individuals. For more information on the issues and impacts discussed with landholders please refer to Volume 2, Appendix T. Landholders were also consulted with regard to land access and appropriate protocols for HGPL and EIS consultants to follow while on properties.

Y.2.5.2 Native Title Claim Group Consultations

Native Title Claim Group consultations occurred as part of the Cultural Heritage Management Plan. For more information on these consultations refer to Volume 1, Section 18.

The Proponent has established a Native Title Agreement and a Cultural Heritage Agreement with the party holding a registered Native Title claim over the Kevin's Corner mining area, the Wangan and Jagalingou People, and continues to consult with them relevant matters.

A consultation with immediate local indigenous community members was not carried out as part of the social impact assessment. BRC however has indicated that the local community is small and well integrated. Further consultations with the Wangan and Jagalingou People and the local community will be conducted during Phase 2 SIMP development in order to assess ongoing Indigenous development.

The Project scoping study determined that a separate consultation program for the local Indigenous population was not considered necessary due to the small population (<25 ABS, 2001) and level of integration in the community. This assessment was corroborated by the BRC through consultation. As such all community members were consulted through the same process with the exception of the Native Title Claim Group. Further consultations with the Wangan and Jagalingou People and the local community will be conducted during Phase 2 of the SIMP to develop the Indigenous components of the SIMP.

Y.2.5.3 Consultations with Emergency Service Providers

HGPL has consulted with emergency service providers as part of the EIS. HGPL sees this as an ongoing process and will continue to consult with emergency service providers, particularly in relation to development of management plans for:

- Traffic Management Plan;



- Community Safety and Health Plan;
- Emergency response plans; and
- Air Quality Management Plan.

Some emergency services providers including ambulance, hospitals and police were consulted for the social impact assessment and emergency protocols for management plans. This consultation will be ongoing throughout the life of the Project.

Y.2.5.4 Consultations with other local stakeholders

URS engaged in a series of targeted consultations with local stakeholders regarding the Kevin's Corner Project, including:

- Barcaldine Hospital;
- Local businesses in Alpha and Jericho;
- Central Highlands Development Corporation;
- Queensland Police Service; and
- Remote Area Planning and Development Board.

Notably a business survey was conducted in Alpha to gain insight into localised spending habits, local business needs and supply chain readiness; six surveys were returned. URS also conducted targeted consultations with relevant stakeholders to inform a case study examining experiences of mining in the towns of Springsure and Rolleston (see Volume 2, Appendix T). The following stakeholders were consulted:

- Central Highlands Regional Council (Springsure Office);
- Springsure State School;
- Central Highlands Development Corporation;
- Local real estate agents;
- Local businesses in Rolleston; and
- Springsure Hospital.

Y.2.5.5 Other Consultations

HGPL conducted additional meetings with stakeholders including regional councils not recorded in the EIS process but regarding the Project. Other consultation including meetings and other forms of communication with key regulatory agencies, including the Department of Employment, Economic Development and Innovation (DEEDI), formerly Department of Infrastructure and Planning, Social Impact Assessment Unit (SIA Unit), were not recorded in this report.

SIA consultations were also conducted with key stakeholders including schools, health care facilities, council staff and child care providers (e.g. C&K). Information was collected in the four communities:

- Alpha;
- Barcaldine;



- Clermont; and
- Emerald.

A higher level of data was collected for the community of Alpha due to its proximity to the Project site, the Project accommodation and transportation policies, and the potential social impacts that could occur there. The information collected from these stakeholder consultations was recorded in the SIA (refer to Volume 2, Appendix T).

Y.2.6 1300 Telephone Number

HPPL established and maintained a 1300 telephone number for the broader process of Project communications. HPPL maintained the Project free-call number throughout the EIS process (1300 279 766).

Y.2.7 HPPL Project Website

HPPL established and maintained a Project webpage (<http://hancockcoal.com.au/go/current-projects/kevin-s-corner>) on their corporate website (www.hancockcoal.com.au) for the broader process of Project communications for both the Alpha and Kevin's Corner Projects. A snap shot of the webpage is provided in Appendix B.

Y.2.8 Project Factsheets, Community Updates and Questionnaires

Project factsheets for the proposed developments in the area (e.g. Kevin's Corner Coal Project, Alpha Coal Project, mine and rail) were developed and handed out at all public consultation events (community information sessions and regional shows). Copies of the fact sheet were also left at the Regional Councils' Offices for the public to review. A copy of the Alpha and Kevin's Corner factsheets is provided in Appendix C.

Community updates were sent out on two occasions – October 2009 and February 2010. These updates provided the communities with a basic level of understanding regarding the Project and a timeline of past, present and future events. Information was also provided on how to contact HPPL. A copy of the community updates is provided in Appendix D.

A questionnaire was developed for the mine component of the EIS to solicit targeted feedback from stakeholders. Questionnaires were distributed to willing recipients at the community events. Participants were encouraged to complete the questionnaires and return them to HPPL either in person on the day or by mail. A postage paid return envelope and address were provided. A copy of the questionnaire is provided in Appendix E.

Y.2.9 Databases

A consultation manager database (www.consultationmanager.com.au) was maintained to record all consultations as part of the Public Consultation Process. The database was maintained from April 2010 until the submission of draft EIS reports to HGPL. An internal consultation matrix (matrix) was also developed by URS and maintained to track issues and comments from stakeholders throughout the EIS process. This matrix was developed to act as a transition between feasibility stage consultation and ongoing consultation. The matrix contains the following sections to assist in the issues tracking process:



- Stakeholder mapping tool;
- Stakeholder engagement tracking tool;
- Issue risk profiles;
- Questionnaire results;
- Communications strategy;
- Communities; and
- Stakeholder engagement roles and responsibilities.

The matrix was designed to act as an information collection point and transition into an Issues and Risks Register as part of the ongoing Issues and Risks Action Plan. This plan includes mechanisms for stakeholder feedback and complaints, as well as a form of grievance mechanism. The Issues and Risks Action Plan will be developed as part of the Phase 2 SIMP process (see Volume 1, Section 29 and Volume 2, Appendix T for more information on the SIMP).

The matrix is currently an internal document only and is not available for distribution.

Y.3 Results of Consultation Activities

Y.3.1 Community Information Sessions

Six Community Information Sessions were held as part of the EIS process. The information sessions in Alpha, Clermont, and Emerald were focussed on the Alpha (mine) and the Kevin's Corner Coal Projects. The Collinsville and Bowen community information sessions were focussed on the Alpha Coal Project (rail), though mine information relating to both the Alpha (mine) and Kevin's Corner Projects was available.

Y.3.1.1 Alpha

The Alpha Community Information Session was held on Tuesday 4 May 2010 from 5.00pm to 8.00pm at the Alpha Town Hall. A total of 19 people attended the Session. Figure Y-1 shows a scene from the Alpha community session.

Figure Y-1 Alpha Community Information Session


Source: HGPL

Table Y-2 contains a list of issues raised by people who participated in the Alpha Community Information Session and subsequent follow-up consultation with community members.

Table Y-2 Issues raised at the Alpha Community Information Session

Topic	Issues Raised (as described by participant)
Social impact issues	<ul style="list-style-type: none"> The FIFO nature of the workforces versus growing the local community (having the workforce based in Alpha or surround towns). Having locally based workforces would increase the loyalty to the job and to the local community (including local spending benefiting local businesses). The social impact assessment [for the Alpha Coal Project] should have been started in 2007 when the mine component of the Project was announced. Social impacts (such as an increase in property values) started to occur in 2007. Some older people have sold their properties and left Alpha because of concerns in relation to the Projects. Need to look at the other towns in the region for development, such as Barcaldine and Jericho as options for a permanent workforce (rather than FIFO). There are a number of families who would relocate to Alpha if there was secure employment for one or both of the parents, Alpha needs young families. HGPL need to have a local liaison person based in town to keep the residents informed. Need to see the properties as people's homes, not just businesses. There are already people driving out to Alpha looking for work.



Topic	Issues Raised (as described by participant)
	<ul style="list-style-type: none"> Alpha needs to receive some of the benefits of the Project, do not just bypass town (e.g. better roads, better services (particularly medical services) - education means more students, hence teachers at the school). Potential impacts on the local Queensland Ambulance Service, which is currently run by volunteers from the local area. Concern about an increase in crime and sense of security as a result of people being flown in from outside the area. Recognition of the limiting factors facing the community including water, power (frequent brownouts) and sewerage. Currently there is no incentive to relocate to Alpha, there are no services, and how can Alpha compete with Brisbane (assumed base of the FIFO operation) with all its services and facilities? Need to support the elderly so they can stay in town. They are an important part of the community.
Economic issues	<ul style="list-style-type: none"> Alpha needs the financial benefits that could flow from the Project. Concern about bringing in an overseas workforce. Farmers also in business, they need to keep their "shareholders" happy as well. If there are FIFO operations, there will be no direct economic benefit for Alpha. Do not want the same situation to happen to Alpha as what is happening to Clermont (Clermont is wearing the cost of mining but not receiving the benefits). There are already speculators in town pushing the house prices up, it is no longer affordable. House prices are already comparable to the coast. FIFO has a vicious circle, the property prices increase but there are no workers staying in town. Local businesses in town need some guarantee that the Projects are going ahead so they can prepare to make the most of it. Need to have local employment and procurement policies to support local businesses and contractors.
Cumulative impact issues	<ul style="list-style-type: none"> Water is life and need water to run the properties. Broader issues of coal mining versus agricultural production (the region is part of the food belt of Queensland). Increased demand on housing and infrastructure. Increased business and employment opportunities. People asked if there were going to be two railway lines constructed and operated (referring to the Proponent's and Waratah's proposed Projects).

Y.3.1.2 Clermont

The Clermont Community Information Session was held on Wednesday 5 May 2010 from 3.00pm to 7.00 pm at the Clermont Community Hall. A total of 41 people attended the Session. Table Y-3 contains a list of issues raised by people who participated in the Clermont Community Information Session and subsequent follow-up meetings.

Table Y-3 Issues raised at the Clermont Community Information Session related to mine component

Topic	Issues Raised (as described by participant)
Social impact issues	<ul style="list-style-type: none"> Need to have emergency evacuation procedures for the construction accommodation village and for the relevant services to be aware of these plans. There needs to be on-site security for accommodation villages. Need to stop



Topic	Issues Raised (as described by participant)
	<p>the "roo shooting" and there could be looting of local properties.</p> <ul style="list-style-type: none">• Need to recognise the issues of substance abuse and domestic violence, keeping in mind it is a big issue but perpetrated by a small portion.• Increased road traffic is a safety issue.• Need to have a locally based community liaison officer (similar to Rio Tinto) and an overall liaison officer for the whole Project.• If the Project is going to be using the Alpha-Clermont Road, it needs to be upgraded and maintained at the higher standard.
Economic issues	<ul style="list-style-type: none">• Concern about bringing in an overseas workforce.• Need to employ locally (unlike Rio Tinto).• Need to employ locally (like Rio Tinto).• No local benefits from a FIFO workforce.• Recognise the need for FIFO in the area but feel other models could work.• Consider transporting workforce from Clermont to Alpha (source of local employment) by drive in, drive out (DIDO), bus in, bus out (BIBO) and possibly FIFO.
Cumulative impact issues	<ul style="list-style-type: none">• People asked if there were going to be two railway lines constructed and operated (referring to the Proponent's and Waratah's proposed Projects).

Y.3.1.3 Emerald

The Emerald Community Information Session was held on Thursday 6 May 2010 from 3.00pm to 7.00 pm at the Emerald Community Centre. A total of 17 people attended the Session. Table Y-4 contains a list of issues raised by people who participated in the Emerald Community Information Session.

Table Y-4 Issues raised at the Emerald Community Information Session

Topic	Issues Raised (as described by participant)
Social impact issues	<ul style="list-style-type: none">• Impact of mining salaries on local housing prices and rentals;• Queensland Police Service (QPS) often has to be reactive to situations because a proponent does not have all SIA issues resolved).• Gender imbalance with arrival of predominantly male workforce can create problems in respect to perceptions of increased crime levels and threats to personal safety. Drug and alcohol issues also need to be monitored.• Movement of heavy machinery means QPS requires advance warning in order to provide adequate escort services. There are specific concerns over transport arrangements for bulk sample movement from mine to destinations points along Capricorn Highway.

Y.3.1.4 Feedback on the Community Information Sessions

During the Alpha and Clermont community information sessions some participants provided feedback on the sessions.

- Advertising of community information sessions:
 - Participants who provided the feedback explained that they had not received enough notice about the sessions. They advised that they require at least three week's notice in writing. They also recommended that advertising for the next community information sessions should include notices to their letterbox and public notices displayed in Alpha and Clermont (e.g. at the post offices and in local businesses).



- **Format:**
 - Some participants provided feedback on the format of the community information session. They explained their perception of “a deliberate attempt to divide the community” by holding “one on one” meetings as part of the community information sessions. There were recommendations for a public meeting rather than “a drop in session” so all interested members of the public could receive the same information at once.
- **Level and type of information provided:**
 - Concerns were raised about the lack of information made available about the Project. It was recommended that a local liaison person be employed to keep the landholders and community members up to date with Project information.

The community information sessions were designed as an informal event where people could drop in and have a conversation with the Project representatives. This format is a proven effective approach to community consultation and is far more likely to reduce division in the community than a public meeting. Public meetings are notorious for becoming off topic by grandstanding and accusatorial dialogue. There is sufficient literature and anecdotal evidence to suggest that public meetings are an ineffective means of presenting the Project to the community and soliciting feedback for the purposes of the EIS consultation process.

Y.3.2 Meetings with Regional Councils

Y.3.2.1 Barcaldine Regional Council

The Consultation Team met with the Barcaldine Regional Council (Councillors and bureaucratic staff) on Tuesday 4 May 2010 and URS had further meetings with council staff on Tuesday 8 March 2011 and 4-5 April 2011. The Regional Council had previously received Project updates from HCPL/HGPL. Table Y-5 contains background information and a list of issues raised by Barcaldine Regional Council, at the May 2010 and March 2011 meetings.

Table Y-5 Issues raised by the Barcaldine Regional Council

Topic	Issues Raised (as described by participant)
Background information	<ul style="list-style-type: none">• The town of Alpha was originally a railway town but now is preparing to become a mining town.• Top issues for Council for Alpha and Jericho are:<ul style="list-style-type: none">— Availability of land (there are only 30 quarter-acre blocks available currently being developed by Council), land availability is restricted because of flooding, water availability and existing power and sewerage capacity;— Lack of water and the need for infrastructure upgrade (Alpha town currently relies on bore water but the aquifers are only shallow);— Unreliable power and the need for infrastructure upgrade; and— Sewerage system needs an infrastructure upgrade.• Alpha has the following transport options:<ul style="list-style-type: none">— 2 passenger trains per week (to Longreach);— 2 passenger bus services per day (Greyhound and Paradise);— 2 freight trucks per week;— 1 freight train per week; and— No commercial flights.• Council is aware that they may need to make amendments to the planning scheme to allow for future development, e.g. industrial areas.



Topic	Issues Raised (as described by participant)
	<ul style="list-style-type: none">• Communication services are limited (still mobile phone [Next G] black spots in town).• The Alpha area is predominantly cattle grazing though there are other forms of agriculture in the northwest of the council.• BRC has developed a community reference group with key stakeholders, many based in Barcaldine, to discuss the mines and future development in the region. The group has representatives from health, police, education, as well as an engineer, environmentalist, landholder group and council representative.
Social impact issues	<ul style="list-style-type: none">• Safety, predominantly road safety, e.g. line of sight on crest of hills such as the turn off to Pine Hill. The road (highway) is another major concern. BRC believes the number of vehicle movements from west to east along the Capricorn Highway has increased threefold this year (2011). BRC would prefer Hancock to transport the majority of their construction materials along the rail (current Rockhampton to Longreach line) for initial construction, and other operational equipment along Project line and existing line throughout the Project; particularly fuels.• BRC indicated that the police say they can provide enough human resources but do not have enough vehicles to deal with the additional demand from the multiple proposed resource projects in the area.• Alpha is already being impacted - a vacant flat four years ago could be purchased for \$6,000 - \$8,000 now it could sell for \$150,000. A house block four years ago could be purchased for \$8,000 - \$12,000 now sells for \$32,000. There is a lot of interest in housing in Alpha; however, houses and house sites are not available.• Properties have not been changing hands like they used to, there is a low steady transition now. People from the coast are heading west and people out west are heading east.• There has been a recent change in the population of Alpha; the number of older people has decreased. There is a vacuum of young people; they leave to attend boarding school until their mid 20's when they might return (usually to get a job in the mines). The boys tend to return but the girls rarely do.• Council would like to see local training and apprenticeship programs for young people (not just boys) to keep young people in the community.• The Council said that they need support to increase the quality and number of medical services currently provided. Staff and volunteers do their best but if more people are going to move to the region then there needs to be an improved level and type of medical service provided (at the moment there is no doctor and the Queensland Ambulance Service ambulance is operated on a volunteer basis). There has been reduction in the numbers of people in Alpha coinciding with the reduction of government services provided to regional areas.• BRC does not believe the Projects can operate on a predominantly FIFO arrangement, or do they believe this is practical/possible in the long term. They believe the 90:10 ratio in the reports will likely be 50:50 over time.• BRC believes there could be better communication between BRC and Hancock regarding specific Project details, which would in turn assist Council in its future planning.• With respect to the Alpha Coal Project and Kevin's Corner Coal Project, BRC would like to see development of the proposed access road (Saltbush Road) near the Alpha aerodrome as the principle access route to the mine site



Topic	Issues Raised (as described by participant)
Environmental concerns	<ul style="list-style-type: none">• Concern regarding impacts of the Project (predominantly the proposed mine) on ground water as the landholders have a high reliance on ground water because of the intermittent streams.
Cumulative impact issues	<ul style="list-style-type: none">• Council is trying to manage the opportunities created by all the proponents and their projects to ensure a positive outcome for their region; however, they are waiting on information from the mining companies prior to making any changes (e.g. employment numbers during construction and operation). They explained that locals had seen the "hype" before and nothing happened and are sceptical of local opportunities.• Council is struggling to attract and retain staff because of the housing impacts, and cannot meet the employment conditions of the mines (the mines are attracting all the tradesmen). There was the suggestion that the mines could job share with the Councils.• Concern about the skills shortage impacts on property owners who already struggle to attract employees and contractors because of the mines.
Project design	<ul style="list-style-type: none">• Particularly for the Alpha Coal Project, BRC does not want HCPL to build their own airport; instead the existing airport should be upgraded and infrastructure improved so that the general public can also use it (increasing services that can be made available in Alpha).• Subsequent consultation with BRC in April 2011 discussed the rationale for the Kevin's Corner aerodrome necessity with regard to Project logistics.• The construction and operation needs to take into consideration the school bus service.• Jericho has the land to develop, so maybe an alternative to Alpha for operational workforces (including service industries) to be relocated.• BRC is interested in the proposed light industrial areas (LIA) for the Projects, including where they are located and who can use them. They do not believe that businesses will use the LIA on KC site because it is too far from the other projects. They feel developing industrial areas in Alpha would be better for the Projects (central location) and the community/council as a whole.• Subsequent consultation with BRC in April 2011 discussed the rationale for the LIA on Kevin's Corner and that it was an option for third parties to utilise, and was their choice.

Further meetings were held between the Proponent, URS and BRC in April 2011. The following aspects, for both the Kevin's Corner and Alpha Coal Mine Projects, were discussed:

- Kevin's Corner and Alpha Mine Project Infrastructure;
- Alpha town aerodrome use for the Alpha Coal Project (initially) and the rationale behind inclusion of the Kevin's Corner aerodrome in the Kevin's Corner EIS;
- Alpha-Clermont Road upgrades, Degulla Road realignment options and an alternative Project access road from the Capricorn Highway via Saltbush Road;
- Comments on the Alpha EIS; and
- SIMP strategy and ongoing activities for Stage 2 completion.

All discussions with the BRC included the development of the SIMP strategy and the desire for the Project to collaborate with the council on the SIMP finalisation and ongoing operation.



Y.3.2.2 Isaac Regional Council

The Consultation Team met with the Isaac Regional Council (IRC) staff on Wednesday 5 May 2010. Table Y-6 contains background information and a list of issues raised by the Isaac Regional Council.

Table Y-6 Issues raised by the Isaac Regional Council

Topic	Issues Raised (as described by participant)
Background information	<ul style="list-style-type: none">The diversity of towns in the Isaac Region. Clermont was described as a traditional town, with the history of Clermont based in sheep farming, then the transition to gold and copper mining then coal, but being actively supported by the beef industry (which grew after the shearers strikes).Other towns in the Region were described as:<ul style="list-style-type: none">— Moranbah, Middlesbrough, Glenden and Dysart – mining;— Coppabella – rail; and— Nebo – agriculture and more recently mining.The IRC region is responsible for 75% of Queensland GDP but only receives 0.1% back from the State Government in service delivery (per capita basis).The IRC is currently validating their Community Plan for Clermont under the <i>Local Government Act 2009</i>. The Community Plan will have a 10 year life and contains the vision of the people living in the Region.Clermont will be impacted by the Project because of the social networks between people in the region, how people access the region (e.g. road networks including the Alpha to Clermont Road) and location of services and facilities (e.g. recreational facilities and health services).Clermont is ready to grow, there are already houses ready for purchase and rent, education and medical services are provided. There are two general practitioners, Queensland Ambulance Services, police and dentist in town.Clermont is facing a decreasing population with the closure of the Blair Athol mine (now upgraded to 6 years from 2010), the new Clermont mine will not require the number of positions that were required at Blair Athol.With the existing mines (Moranbah and Dysart) in the area relying on a DIDO model, the travel of fatigued workers is a large local issue.The level of legislated involvement of Councils in EISs is restricted to being able to make comments on the draft TOR and draft EIS, which sets up a negative relationship potentially based on conflict; this should be expanded to a more positive negotiation based approach.
Social impact issues	<ul style="list-style-type: none">Impacts on people living in the Region need to be taken into consideration. It was explained that people living in the Region identified the Project as being beneficial to the region if opportunities are provided (e.g. local employment and procurement). The staff of the IRC also pointed out that people in the region were aware of the negative impacts of development and would like to see these minimised.HGPL needs to work with Council to ensure that future plans (including the construction accommodation village) are taken into consideration for forward planning of the Region.
Economic impact issues	<ul style="list-style-type: none">The importance of having opportunities created for those towns and regions that will be impacted by the Project. The FIFO arrangements do not create/limit local opportunities.The Project employment opportunities could act as a means to sustain Clermont beyond Blair Athol and Clermont mines.There is a strong business group in Clermont (a subcommittee of the Clermont Progress Association) who would like Council to negotiate with the mining companies on their behalf to ensure that local opportunities are realised.The business group sees economic development of the region as the way to achieve a sustainable Clermont, by having a permanent and growing population.



Topic	Issues Raised (as described by participant)
Cumulative impact issues	<ul style="list-style-type: none">The Region is already experiencing the cumulative impacts of a number of mining projects.

Y.3.2.3 Central Highlands Regional Council

The Consultation Team met with the Central Highlands Regional Council (CHRC) staff on Thursday 6 May 2010 and with the Mayor on Friday 7 May 2010. Another meeting with Council staff was made on Thursday 10 March 2011. Table Y-7 contains background information and a list of issues raised by CHRC regarding Emerald.

Table Y-7 Issues raised by the Central Highlands Regional Council (Emerald)

Topic	Issues Raised (as described by participant)
Social Impact Issues	<ul style="list-style-type: none">Impacts on people living in the Region need to be taken into consideration. It was explained that people living in the Region identified the Project as being beneficial to the region if opportunities are provided (e.g. local employment and procurement).Council would appreciate HGPL developing a community liaison position and including Council in future activities and planning. This would ensure that future plans (including the construction accommodation village, transportation and logistics) are taken into consideration for forward planning of the Region.Understanding of the rationale behind the FIFO/DIDO/BIBO policy – desire for the council to benefit from the DIDO/BIBO opportunities.Desire to work with the Proponent to maximise community benefits from the Project(s).
Economic issues	<ul style="list-style-type: none">Potential for CHRC businesses to supply and contract to the Project(s) through the Hi-Net system (means of grouping local services from various businesses to offer competitive proposals to large scale projects – this system is currently being developed).Potential to create employment opportunities for communities throughout CHRC.
Cumulative impacts issues	<ul style="list-style-type: none">Potential for Project(s) to assist in the Emerald North-West bypass and industrial precinct.Requirement for a community liaison with CHRC.Potential to attract young families to the area.Potential to increase population in Emerald.Infrastructure opportunities for the council (mainly roads).Potential for Emerald to expand as a service centre for southern Bowen Basin and Galilee Basin.Potential to expand services in the region through achievement of critical mass (i.e. education, health, etc.).

Y.3.3 Regional Shows

Y.3.3.1 Alpha Regional Show

HGPL had a stand at the Alpha Regional Show (refer to Figure Y-2) staffed by HGPL, AARC and GHD. Approximately 45 people had discussions with the Consultation Team.



Figure Y-2 Stand at the Alpha Regional Show



Source: HGPL

Issues raised by community members at the Alpha Regional Show were:

- Employment and procurement opportunities (e.g. local contractors);
- General interest in where the Project (mine and rail) is proposed to be constructed;
- Impacts on landholders and suggestions for how they could be managed; and
- General support for the Project (mine and rail) and opportunities for the region to grow (population) and increased service provision.

Y.3.3.2 Clermont Regional Show

HGPL had a shared stand at the Clermont Regional Show (refer to Figure Y-3) staffed by HGPL, AARC and GHD. Approximately 45 people had discussions with the Consultation Team.



Figure Y-3 Stand at the Clermont Regional Show



Source: HGPL

Issues raised by community members at the Clermont Regional Show were:

- Employment and procurement opportunities (e.g. local contractors);
- General interest in where the Project (mine and rail) is proposed to be constructed;
- Impacts on landholders and suggestions for how they could be managed; and
- General support for the Project (mine and rail) and opportunities for the region to grow (population) and increased service provision.

Y.3.4 Targeted consultations

Y.3.4.1 Targeted consultations with other local stakeholders

URS conducted targeted stakeholder consultations with key stakeholders (see Section 2.5.4) as well as conducting a business survey with business owners in Alpha over the period Tuesday 8 March - Thursday 10 March 2011. The following key issues were highlighted:

- Businesses had a strong desire to have some form of small business development support and would like to discuss local procurement opportunities with Hancock.



- Day care constraints in Alpha are a big issue for many workers as these limitations restrict work schedules and commitments.
- The majority of people in Alpha do some shopping in town but the majority in Emerald.
- The Alpha housing market had remained relatively stagnant for the past five months

URS also conducted consultations relating to a case study examining the impacts of mining on the towns of Springsure and Rolleston. These consultations were also conducted over the period Tuesday 8 March - Thursday 10 March 2011, and the following positive impacts were highlighted:

- The value of effective communication mechanisms with the mining companies;
- Community contributions to school, hospital, primary infrastructure (for Rolleston) etc.;
- Population stabilisation for Springsure;
- School enrolments stabilisation; and
- Provision of an alternative source of employment for the agricultural community and the community (particularly if flexible work policies are employed).

Key negative impacts experienced in the towns were noted as:

- Changes in community harmony;
- Impacts of FIFO and shift work on family and community life;
- Stress in the housing market (particularly in Springsure); rental increases in both towns;
- Increase in traffic and associated road accidents; risky behaviour of some employees driving long distances after shifts;
- Problems with retention and recruitment of staff exacerbated;
- Local business supply chain opportunities have generally been missed; and
- Price rises of food and other goods.

This information has been used to inform both the assessment of likely impacts on the community of Alpha as well as inform appropriate mitigation strategies for identified impacts of the Kevin's Corner Project.

Y.3.5 Questionnaires

A total of 24 questionnaires were returned to HGPL. Figure Y-4 identifies concerns identified through the questionnaires. It is important to note that the list was provided within the questionnaires, and respondents were asked to rate each area of concern as follows:

- Very positive;
- Positive;
- No effect;
- Negative;
- Very negative; or



- Unsure.

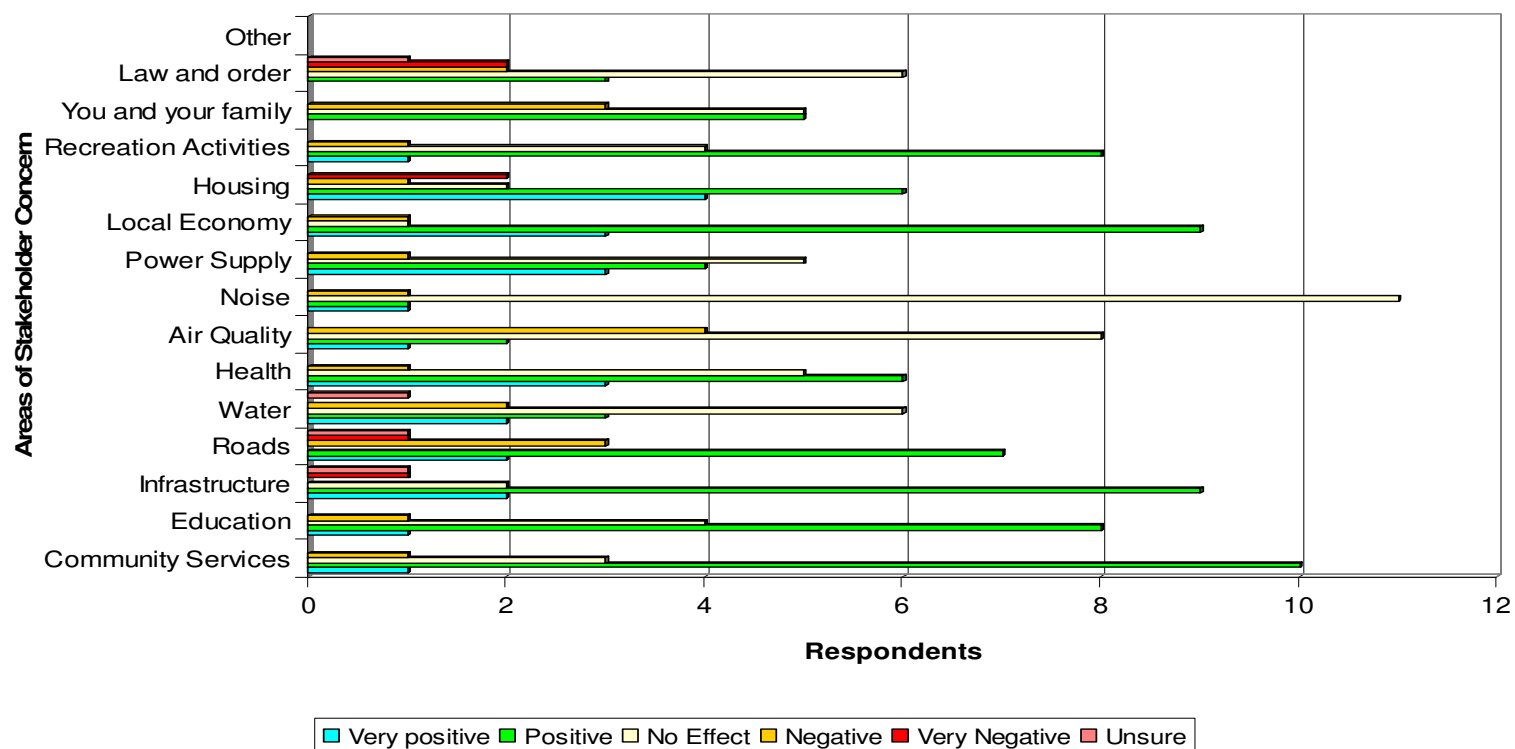
The respondents identified their communities as follows:

- Alpha (7);
- Barcaldine (2);
- Clermont (8);
- Jericho (1);
- Jericho, Alpha, Aramac (1);
- Moranbah (1); and
- Unspecified (3).

It is important to note that one individual rated 3 categories very negative, 7 negative and 4 no effect. Removal of this outlier from the overall results produces a much different set of results that is more representative of the group of responders as a whole. All other respondents rated most categories positive or no effect, with occasional areas of negative, predominantly for air quality, roads and impact on their family. Air quality was rated the biggest concern with 16.7% of respondents rating it negative. 8.3% of respondents rated law and order, and housing as very negative. 25% of respondents (or more) rated recreational activities, housing, local economy, health, road, infrastructure, education, and community services as likely to experience positive impacts from the Project.

This survey was not intended to be a scientific survey. The purpose was to provide an additional means for community members and interested parties to provide feedback to the SIA team. Questionnaires were one of many techniques used to collect qualitative and quantitative data for the Project. The results of the questionnaires were taken into consideration in the identification and analysis of impacts, along with other sources of data from targeted consultation with key stakeholders. For more information on the impacts assessment methodology see Volume 2, Appendix T.

Figure Y-4 Areas of stakeholder concern identified in the questionnaire



Source: HGPL Questionnaire Feedback

Y.4 Summary of Results

Y.4.1 Overview

Feedback on the Project through the EIS process focused on:

- Regional Councils; and
- Residents of communities likely to be impacted by the Project.
- Feedback on the Project was different from each of the regions assessed; however, there were consistent messages of:
 - The concern about the landholder impacts and how the impacts could be managed;
 - A desire for the Project to positively contribute to the manageable, sustainable growth of communities in the regions;
 - A desire for councils to be intimately involved in the Project, through roles and responsibilities in the SIMP and inclusion in the Kevin's Corner Consultative Committee (or equivalent body tasked with examining cumulative impacts); and
- Application of lessons learnt from similar developments.

An overall summary of the consultation results found that some landholders will bear the majority of negative direct impacts while the regional councils and neighbouring communities could benefit from the direct and indirect opportunities created by the Project.

Y.4.2 Results

Table Y-8 provides a summary of results for each community area within the regional councils.



Table Y-8 Summary of results per district as expressed by stakeholders

Region	Summary of Results
Alpha	<ul style="list-style-type: none">• Increased focus on the proposed mine rather than the railway.• Concerns for directly impacted landholders and how they will be impacted (on families, properties and businesses).• Growth opportunities for Alpha Township (within current restrictions).• Concern of a FIFO workforce (construction and operation).• Recognition of limitations for the growth of Alpha.• Social impacts are already occurring in Alpha.• Opportunities for other towns in the Barcaldine Region.• Need for a local HGPL liaison person.• Impacts on existing roads from Project vehicles.• Cumulative environmental impacts of the Project (e.g. impacts on the water table).
Clermont	<ul style="list-style-type: none">• Focus on the mine and the railway.• Growth opportunities for Clermont (ready to grow).• Concerns for directly impacted landholders and how they will be impacted (on families, properties and businesses).• Concern of a FIFO workforce (construction and operation).• Need for a local HGPL liaison person.• Impacts on existing roads from Project vehicles.
Emerald	<ul style="list-style-type: none">• Focus on the mine.• Employment and business opportunities for Emerald and other communities in the council.• Infrastructure opportunities for the council (mainly roads).• Benefit of an HGPL liaison person to work with council.• Understanding of the rationale behind the FIFO/DIDO/BIBO policy – desire for the council to benefit from the DIDO/BIBO opportunities.• Potential for Emerald to expand as a service centre for southern Bowen Basin and Galilee Basin.• Desire to work with HGPL to maximise community benefits from the Project(s).

Y.4.3 Incorporation of Results

The results of the feedback received during the EIS public consultation events were:

- Provided to HGPL and incorporated into Project design decisions; and/or
- Utilised in the SIA and Social Impact Management Plan (SIMP) or other technical studies in the EIS and the Environmental Management Plan (EM Plan); and/or
- Cultural Heritage Management Plan.

Y.5 Ongoing Activities

Y.5.1 Consultation Activities

HGPL intends to conduct an additional community information session following the submission of the EIS to the government and prior to or during the subsequent public comment period. This is seen as an effective way for introducing the EIS findings to the community, assisting stakeholders in locating specific information of importance to them, and answering questions related to the Project. This event is currently being planned and is expected to occur close to the start of the public comment period.

HGPL has maintained an open relationship with regional councils and will continue to consult throughout the Project. HGPL recognises the benefits of a healthy and proactive relationship with council and sees significant opportunity in working together to identify and address positive and negative impacts associated with the Project.

HGPL will also continue to consult with other stakeholders and the general public. The 1300 free call number (1300 279 766) will remain open, as will the website. HGPL values the positive relationships built in the community and will strive to maintain that relationship.

HGPL will use stakeholder feedback to determine the necessity, timing, frequency and content of future Project fact sheets. These fact sheets are one of many methods HGPL has employed to ensure all stakeholders have an opportunity to engage with the Project.

Y.5.2 Community Liaison

As part of the EIS, HGPL has committed to the establishment of a function to maintaining ongoing consultation with stakeholders, and council in particular. The Community Liaison will take on a number of roles including:

- Facilitate interaction with councils and key stakeholders;
- Coordinate Project policies and strategies with council planning;
- Represent the Project in planning and other strategic development forums with BRC;
- Consult with local services about upcoming training opportunities and community needs and coordinating efforts where possible;
- Identify and facilitate synergies with relevant policies and programs, particularly with emergency service providers;
- Explore some of the BRC ideas regarding incentive programs and shared resources;
- Assist in notifying residents of significant movement events that may impact road use;
- Coordinate with other potential projects to ensure effective traffic management and coordination with other social issues;



- Proactively develop and nurture relationships critical to ensuring effective participation in regional and local planning processes;
- Identify high priority focus programs that the Project may be able to support through sponsorship or in-kind support;
- Liaise with hospital staff and managers to identify opportunities and synergies through shared resources;
- Participate in the Kevin's Corner Consultative Committee (KCCC), which will provide a cohesive mechanism for information to be shared between the Project and local governments (and other stakeholders as appropriate);
- Inform local planning functions of emerging trends in relation to key social indicators, to support proactive responses or pre-empt potential impacts; and
- Report important social and community feedback to the Project for consideration in future Project design, policies and strategies.

Y.5.3 Kevin's Corner Consultative Committee

The Project will work with State and Local government to develop a Kevin's Corner Consultative Committee (KCCC). Clear terms of reference (ToR) for the KCCC have been developed below for the initial meeting in order to develop the official ToR for future meetings in collaboration with the participants. The role of the KCCC will initially be to assist in the Phase 2 SIMP process. This will enable a more efficient process with key stakeholders to identify key indicators and tracking tools for the SIMP. It will also clearly define the roles and responsibilities of the key stakeholders within the SIMP. The KCCC should also transition the SIMP into Phase 3, and be an active participant in the SIMP throughout the life of the Project. The Project will manage the SIMP; however, there are significant opportunities for the KCCC to maintain a clear purpose through SIMP responsibilities and ongoing input and evaluation.

The KCCC should consider the following potential participants:

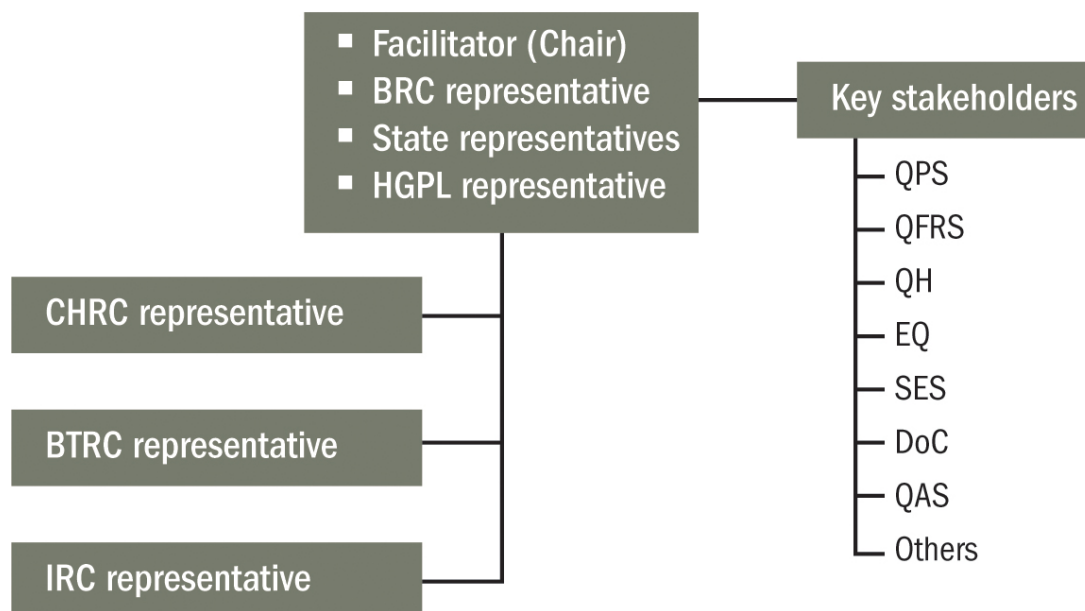
- An independent facilitator to chair the committee;
- Representatives from the Alpha Coal Project;
- Representatives from the Kevin's Corner Coal Project;
- Representatives from the three local councils;
- Representatives for the State Government; and
- Other key stakeholders.

This structure is shown in Figure Y-5 below.

As the Project develops, consideration will be given to the potential to collaborate or join with other Project groups in the Galilee Basin, for the example the Hancock Consultative Committee (HCC) that is to be established as part of the Alpha Coal Project.

The core group of the KCCC will include State Government representatives, BRC, HGPL and an independent facilitator. Councils should consider assigning one or two designated staffers to participate in the KCCC, and focus more on community liaison level participants. The Project should also assign one or two designated staff to participate.

Figure Y-5 Kevin's Corner Consultative Committee Structure



The KCCC should focus on assistance, collaboration and facilitating connections between key stakeholders. The KCCC should strive to integrate projects and processes to streamline development and provide consistency. The KCCC should act as mechanism for coordination and not as a decision-making body. The Proponent and the government have been tasked with making decisions already. It is the decision of the Proponent and the government to determine what tasks (if any) the KCCC should make decisions on.



The KCCC will be the main driver for social impact management development and implementation, and will eventually likely take on some form of management and monitoring role. The KCCC will effectively become a cumulative forum with the inclusion of the Kevin's Corner Coal Project to the existing forum established as part of the Alpha Coal Project, and will be open to the notion of other projects participating as well in the future.

HGPL will contact participants from State and local government (by phone or in face-to-face meetings) to outline the SIMP work carried out to date, the SIMP strategy, the KCCC strategy, and to gauge desire and ability to participate within the process. Draft Terms of Reference (ToR) (see Section 21.5.3.1 below) will be presented to prospective participants.

Y.5.3.1 Draft Terms of Reference for the KCCC

This draft ToR has been developed for the KCCC as a guide for the initial meeting. The ToR will be refined further in consultation with the KCCC. The draft ToR is outlined below.

Y.5.3.2 Purpose

The purpose of the preliminary KCCC is to refine and finalise the Action Plans within the SIMP and identify any pre-construction impacts and mitigation strategies that may need to be undertaken. This is different to the ongoing KCCC which will operate once the SIMP has been initiated, prior to construction of the Project. Once the Project has begun development, the KCCC will facilitate communication between the Proponent and key Project stakeholders regarding key aspects of the construction, operation and de-commissioning phases of the Project for SIMP monitoring and management.

Y.5.3.3 Objective

The objective of the KCCC is to review the draft SIMP Action Plans and provide feedback for finalisation. During Project development, the objective will be to identify the core group responsible for review, monitoring, evaluation and management of the SIMP and reporting to regulators and the community.

Y.5.3.4 Responsibilities

HGPL will:

- Provide secretariat services to the KCCC;
- Resource all operational costs of the KCCC; and
- Transfer outcomes from meeting into the SIMP for finalisation.

Members will:

- Act as representatives of their organisations/agencies; and
- Provide feedback on specific Action Plans to align with their organisational objectives.



Y.5.3.5 Timing

HGPL will initiate establishment of the KCCC in the first half of 2012. It is envisioned that the KCCC will run for the life of the Project, including having a role in decommission-planning and implementation.


Y.5.3.6 Actions

- To development a working Terms of Reference for the KCCC in collaboration with the group; and
- Finalise Action Plans within the SIMP, to complete Phase 2 and transition to Phase 3.



Appendix A HPPL Community Information Session Advertisements

Central Highland News

 | HANCOCK COAL PTY LTD

Alpha Coal Project & Kevin's Corner Projects


Environmental Impact Assessment Community Information Sessions

Hancock Coal and Hancock Galilee are investigating the opportunity to develop the Alpha Coal and Kevin's Corner Projects, two thermal coal mines in the Galilee Basin, supported by rail and port facilities. The projects are currently in the feasibility stage, which includes an Environmental Impact Assessment.

As part of the Environmental Impact Assessment for the Alpha Coal and Kevin's Corner Projects, Hancock Coal invites interested people to attend a Community Information Session at a venue closest to you.

Town	Date	Location
Alpha	Tuesday 4 May 2010, 5.00 – 8.00pm	Alpha Town Hall
Clermont	Wednesday 5 May 2010, 3.00 – 7.00pm	The Supper Room, Clermont Community Hall
Collinsville	Thursday 6 May 2010, 3.00 – 7.00pm	Collinsville Community Centre
Emerald	Thursday 6 May 2010, 3.00 – 7.00pm	Emerald Town Hall Auditorium
Barcaldine	Friday 7 May 2010, 3.00 – 7.00pm	Barcaldine Shire Hall
Bowen	Friday 7 May 2010, 3.00 – 7.00pm	Barrier Reef Institute of TAFE

For more information or to register your interest in attending a Community Information Session, please contact Hancock Coal's Community Relations Manager, Nicole Maguire, on 07 3231 9600 or at email address mail@hancockcoal.com.au. Further information is also available at our website, www.hancockcoal.com.au

 | HANCOCK GALILEE PTY LTD

3109408aaf1

*Bowen Independent*

| HANCOCK COAL PTY LTD

Alpha Coal & Kevin's Corner Projects Environmental Impact Assessment Community Information Sessions

Hancock Coal and Hancock Galilee are investigating the opportunity to develop the Alpha Coal and Kevin's Corner Projects, two thermal coal mines in the Galilee Basin, supported by rail and port facilities. The projects are currently in the feasibility stage, which includes an Environmental Impact Assessment.

As part of the Environmental Impact Assessment for the Alpha Coal and Kevin's Corner Projects, Hancock invites interested people to attend a Community Information Session at a venue closest to you.

ALPHA - Tuesday, 4 May 2010, 5.00 – 8.00pm, Alpha Town Hall.

CLERMONT - Wednesday, 5 May 2010, 3.00 – 7.00pm, The Supper Room, Clermont Community Hall.

COLLINSVILLE - Thursday, 6 May 2010, 3.00 – 7.00pm, Collinsville Community Centre.

EMERALD - Thursday, 6 May 2010, 3.00 – 7.00pm, Emerald Town Hall Auditorium.

BARCADDINE - Friday, 7 May 2010, 3.00 – 7.00pm, Barcaldine Shire Hall.

BOWEN - Friday, 7 May 2010, 3.00 – 7.00pm, Barrier Reef Institute of TAFE.

For more information or to register your interest in attending a Community Information Session, please contact Hancock Community Relations Manager, Nicole Maguire, on 07 3231 9600 or at email address mail@hancockcoal.com.au.

Further information is also available at our website, www.hancockcoal.com.au

44ha rccock



| HANCOCK GALILEE PTY LTD

Miners Midweek

Alpha Coal Project & Kevin's Corner Projects

Environmental Impact Assessment Community Information Sessions

Hancock Coal and Hancock Galilee are investigating the opportunity to develop the Alpha Coal and Kevin's Corner Projects, two thermal coal mines in the Galilee Basin, supported by rail and port facilities. The Projects are currently in the feasibility stage, which includes an Environmental Impact Assessment.

As part of the Environmental Impact Assessment for the Alpha Coal and Kevin's Corner Projects, Hancock Coal invites interested people to attend a Community Information Session at a venue closest to you.

Town	Date	Location
Alpha	Tuesday 4 May 2010, 5.00 – 8.00pm	Alpha Town Hall
Clermont	Wednesday 5 May 2010, 3.00 – 7.00pm	Clermont Community Hall Supper Room
Collinsville	Thursday 6 May 2010, 3.00 – 7.00pm	Collinsville Community Centre
Emerald	Thursday 6 May 2010, 3.00 – 7.00pm	Emerald Town Hall Auditorium
Barcaldine	Friday 7 May 2010, 3.00 – 7.00pm	Barcaldine Shire Hall
Bowen	Friday 7 May 2010, 3.00 – 7.00pm	Barrier Reef Institute of TAFE

For more information or to register your interest in attending a Community Information Session, please contact Hancock Coal's Community Relations Manager, Nicole Maguire, on 07 3231 9600 or at email address mail@hancockcoal.com.au.

Further information is also available at our website, www.hancockcoal.com.au

*Longreach Leader*

| HANCOCK COAL PTY LTD

Alpha Coal & Kevin's Corner Projects**Environmental Impact Assessment Community Information Sessions**

Hancock Coal and Hancock Galilee are investigating the opportunity to develop the Alpha Coal and Kevin's Corner Projects, two thermal coal mines in the Galilee Basin, supported by rail and port facilities. The projects are currently in the feasibility stage, which includes an Environmental Impact Assessment.

As part of the Environmental Impact Assessment for the Alpha Coal and Kevin's Corner Projects, Hancock Coal invites interested people to attend a Community Information Session at a venue closest to you.

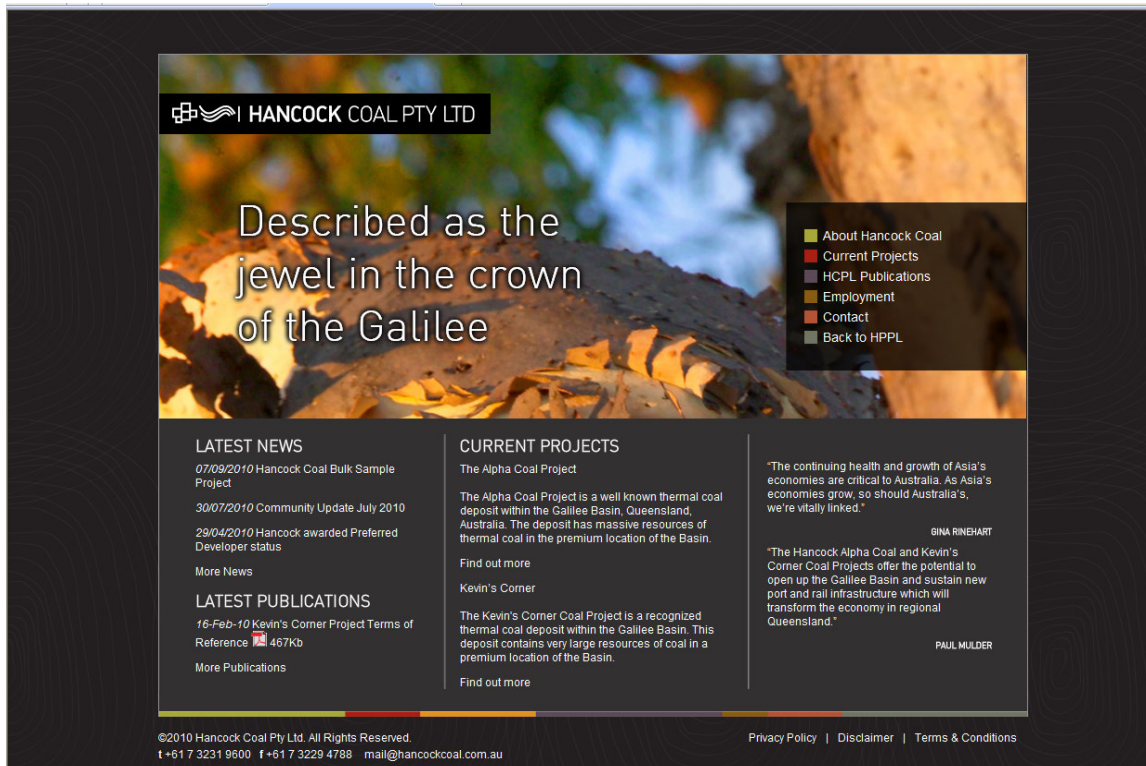
Town	Date	Location
Alpha	Tuesday 4 May 2010, 5.00–8.00pm	Alpha Town Hall
Clermont	Wednesday 5 May 2010, 3.00–7.00pm	Supper Room, Clermont Community Hall
Collinsville	Thursday 6 May 2010, 3.00–7.00pm	Collinsville Community Centre
Emerald	Thursday 6 May 2010, 3.00–7.00pm	Emerald Town Hall Auditorium
Barcaldine	Friday 7 May 2010, 3.00–7.00pm	Barcaldine Shire Hall
Bowen	Friday 7 May 2010, 3.00–7.00pm	Barrier Reef Institute of TAFE

For more information or to register your interest in attending a Community Information Session, please contact Hancock Coal's Community Relations Manager, Nicole Maguire, on 07 3231 9600 or at email address mail@hancockcoal.com.au. Further information is also available at our website, www.hancockcoal.com.au



| HANCOCK GALILEE PTY LTD

Appendix B HPPL Webpage Snapshot





Appendix C Alpha and Kevin's Corner Fact Sheets

Alpha Fact Sheet

MORE INFORMATION

For further information on the Hancock Coal Alpha Coal Project, please contact Hancock Coal on (07) 3231 9600 or 1300 279 766, email: mail@hancockcoal.com.au, or visit the Hancock Coal website www.hancockcoal.com.au

To speak to someone about the mine EIS process, contact AARC on (07) 3217 8772

To speak to someone about the rail or port EIS process, contact GHD on (07) 3316 3000

More information on the EIS process is available on the website of the Qld Department of Environment and Resource Management: www.derm.qld.gov.au

FEEDBACK FORM:

This feedback form will help us to gather information on what you value about your area and the potential changes that may result from the Project's development. Please take the time to fill out this survey form and return it in the reply-paid envelope to:

SIA Team

Alpha Mine Project

PO Box 2371

Toowoong DC Qld 4066

Your Postcode

What do you like about living in this area?

What don't you like about living in this area?

What are the major issues facing your community currently?

How do you think the Alpha Coal Project will affect the lifestyle of your community?

Any other comments about the Alpha Coal Project?

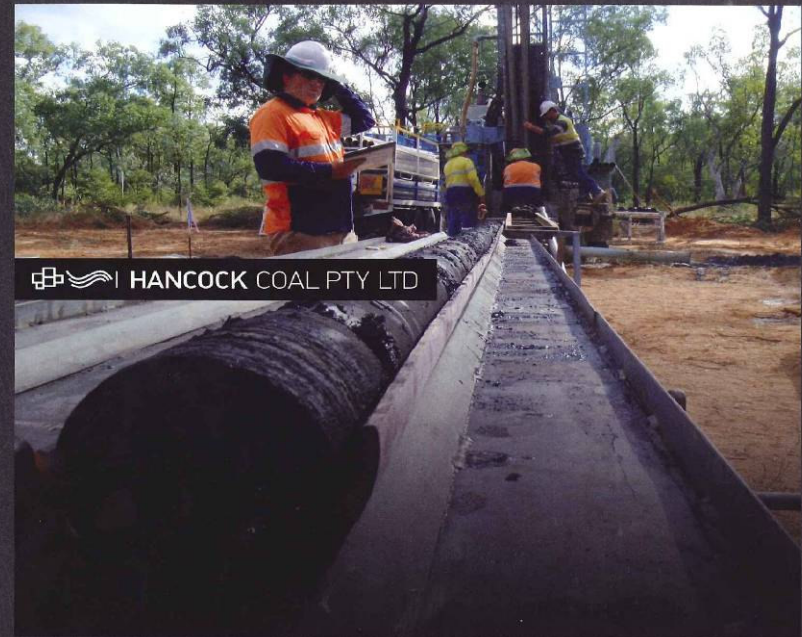
If you would like to be on the Hancock Coal mailing list to receive project updates, please provide the following information:

Name:

Preferred Contact Address:

(PCSTAL)

(EMAIL)



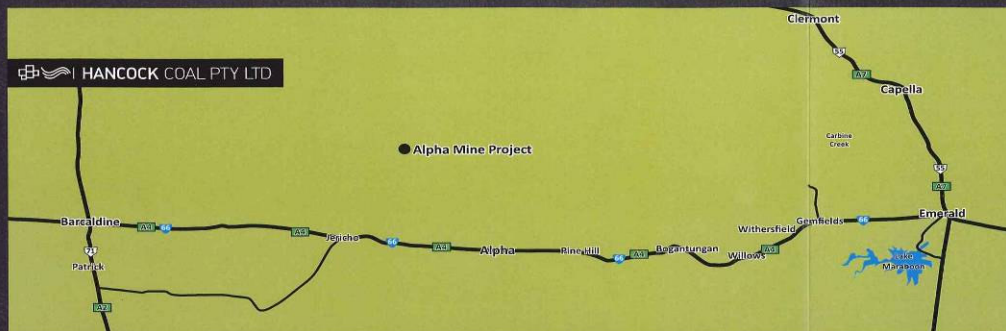
Alpha Coal Project Fact Sheet

Hancock Coal proposes to establish a thermal coal mine in the Galilee Basin, Central Queensland, to service international energy markets for thermal coal. The company's coal tenements are situated around 50km north-west of the town of Alpha, and 450km west of Rockhampton.

The project includes the construction and operation of a new railway to transport coal to the Abbot Point Coal Terminal 25km north of Bowen. The proposed open cut mine is expected to have an initial export capacity of 30 million tonnes a year, with a mine life in excess of 30-plus years.



Alpha Fact Sheet



COMMUNITY CONSULTATION

As part of the environmental approval process, Hancock Coal is preparing an Environmental Impact Statement (EIS) which includes a community engagement process to ensure all stakeholders are made fully aware of project plans and developments.

Through this process, groups, individuals and local authorities who may be impacted by the project will be consulted, and opportunity will be provided to raise and address issues and concerns.



WHAT IS THE EIS PROCESS?

Attaining environmental approval for the project from the Queensland Government is an important part of Hancock Coal's ongoing feasibility study. For this purpose, Hancock Coal has contracted AustralAsian Resource Consultants (AARC) to undertake the mine impact assessment, and GHD to undertake the rail and port impact assessment.

KEY STEPS TO THE ENVIRONMENTAL IMPACT STATEMENT (EIS) PROCESS:

- Hancock Coal prepares an Initial Advice Statement (IAS) and request for 'significant project declaration'.
- Queensland Coordinator-General makes a declaration of a 'significant project'.
- Coordinator-General manages a public and advisory agencies review of the draft Terms of Reference for the project.
- Coordinator-General finalises the Terms of Reference for the project.
- Hancock Coal prepares an Environmental Impact Statement (EIS) and submits the report to the Coordinator-General.
- Coordinator-General manages a public and advisory agencies review of the Environmental Impact Statement.
- Hancock Coal prepares a supplementary Environmental Impact Statement (if directed by the Coordinator-General).
- Coordinator-General evaluates the Environmental Impact Statement and other information in consultation with advisory agencies.
- Coordinator-General writes a report outlining decision on project (approved or not) and any conditions and recommendations on subsequent approvals.
- The Coordinator-General's report is sent to Hancock coal and approval decision makers within Government.

FACTS & FIGURES

Location	The project is located approx. 50km north-west of Alpha and 450km west of Rockhampton, in the Galilee Basin.
Local Government Areas of Interest	Barcaldine Regional Council, Central Highlands Regional Council, Isaac Regional Council
Owners	Hancock Coal Pty Ltd
Production	44 Mtpa run of mine (ROM) thermal coal operation, producing 30 Mtpa of product coal for export markets

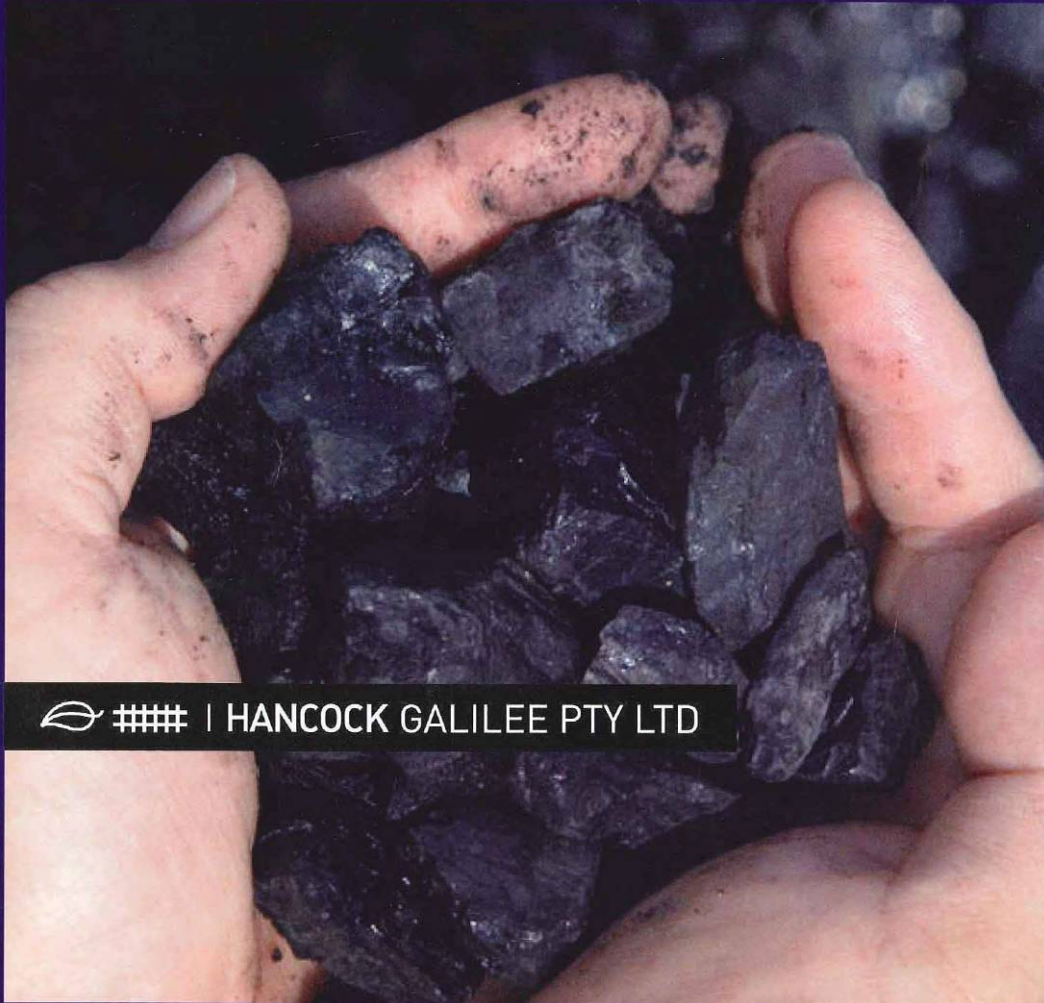
MINE CONSTRUCTION PHASE

Duration	Three year ramp up phase
Employment	A construction workforce is estimated to peak at up to 2500 people

MINE OPERATIONS PHASE

Duration	30+ years
Employment	The mine will have an operational workforce of up to 1500 people at peak production.
Mining Method	Open cut, using dragline, truck and shovel excavators for overburden removal, and truck/shovel for coal mining operations.
Coal Preparation	Raw coal will be processed at a ROM facility, and washed using a conventional wash plant.
Rail Transport	Coal will be transported to Abbot Point port via a standard gauge rail system with trains of approx 24,000 tonnes capacity.

Kevin's Corner Fact Sheet



 #### | HANCOCK GALILEE PTY LTD

Kevin's Corner Project Fact Sheet

Hancock Galilee proposes to establish a thermal coal mine in the Galilee Basin, Central Queensland, to service international energy markets for thermal coal. The company's coal tenements (Alpha Coal and Kevin's Corner Projects) are situated around 50km north-west of the town of Alpha, and 450km west of Rockhampton.

The Kevin's Corner Project will share significant rail and port infrastructure with the adjacent Alpha Coal Project. The railway component includes the construction and operation of a new railway to transport coal to the Abbot Point Coal Terminal, 25km north of Bowen. The proposed mine will be predominantly underground, with some open-cut operations, and is expected to have an initial export capacity of 30 million tonnes a year, with a mine life in excess of 30-plus years.

Kevin's Corner Fact Sheet



FACTS & FIGURES

Location	The project is located approx. 50km north-west of Alpha and 450km west of Rockhampton, in the Galilee Basin
Local Government Areas of Interest	Barcaldine Regional Council, Central Highlands Regional Council, Isaac Regional Council
Owners	Hancock Galilee Pty Ltd
Production	40 Mtpa run of mine (ROM) thermal coal operation, producing up to 30 Mtpa of product coal for export markets

MINE CONSTRUCTION PHASE

Duration	Four year ramp up phase
Employment	A construction workforce is estimated to peak at up to 2500 people

MINE OPERATIONS PHASE

Duration	30+ years
Employment	The mine will have an operational workforce of up to 1500 people at peak production
Mining Method	Predominantly underground coal mining, using longwall operations, with some open cut operations.
Coal Preparation	Raw coal will be processed at a ROM facility, and washed using a conventional wash plant.
Rail Transport	Coal will be transported to Abbot Point port via a standard gauge rail system with trains of approx 24,000 tonnes capacity

MORE INFORMATION:

For further information on the Hancock Galilee Kevin's Corner Project, please contact Hancock Galilee on (07) 3231 9600 or 1300 279 766, email : mail@hancockcoal.com.au, or visit the Hancock Coal website www.hancockcoal.com.au

To speak to someone about the mine EIS process, contact AARC on (07) 3217 8772

To speak to someone about the rail or port EIS process, contact GHD on (07) 3316 3000

More information on the EIS process is available on the website of the Qld Department of Environment and Resource Management: www.derm.qld.gov.au

COMMUNITY CONSULTATION

As part of the environmental approval process, Hancock Galilee is preparing an Environmental Impact Statement (EIS) which includes a community engagement process to ensure all stakeholders are made fully aware of project plans and developments.

Through this process, groups, individuals and local authorities who may be impacted by the project will be consulted, and opportunity will be provided to raise and address issues and concerns.

WHAT IS THE EIS PROCESS?

Attaining environmental approval for the project from the Queensland Government is an important part of Hancock Galilee's ongoing feasibility study.

KEY STEPS TO THE ENVIRONMENTAL IMPACT STATEMENT (EIS) PROCESS:

Hancock Galilee prepares an Initial Advice Statement (IAS) and request for 'significant project declaration'.

Queensland Coordinator-General makes a declaration of a 'significant project'

Coordinator-General manages a public and advisory agencies review of the draft Terms of Reference for the project

Coordinator-General finalises the Terms of Reference for the project

Hancock Galilee prepares an Environmental Impact Statement (EIS) and submits the report to the Coordinator-General

Coordinator-General manages a public and advisory agencies review of the Environmental Impact Statement

Hancock Galilee prepares a supplementary Environmental Impact Statement (if directed by the Coordinator-General)

Coordinator General evaluates the Environmental Impact Statement and other information in consultation with advisory agencies

Coordinator General writes a report outlining decision on project (approved or not) and any conditions and recommendations on subsequent approvals

The Coordinator-General's report is sent to Hancock Galilee and approval decision makers within Government



Appendix D HPPL Community Updates



HCPL Community Update - Isaac RC October 09 FINAL

**HANCOCK COAL PTY LTD**

Hancock Coal Update – Central Highlands Region

Hancock Coal and Hancock Galilee have started 2010 with a number of significant milestones confirming the development of the Alpha Coal and Kevin's Corner Projects in the Galilee Basin. The projects include development of two adjacent 30 million tonnes per annum thermal coal mines, as well as associated port and rail infrastructure. Each mine has an expected life of 30-plus years.

In February 2010, the projects moved into Bankable Feasibility Study (BFS) phase. This work is continuing along with the Environmental Impact Statement (EIS) studies currently being undertaken for the Alpha Coal and Kevin's Corner Projects.



Hancock has submitted to the State Government a comprehensive application for declaration of an Infrastructure Facility of Significance for a 495km rail corridor from the Galilee Basin to Abbot Point. Consultation on this submission is underway through the Department of Infrastructure and Planning until March 22, 2010. This designation status does not affect the need to obtain all environmental and other relevant approvals.

Hancock is also ramping up its work with landowners as it looks to finalise the rail alignment from the mines to port, and conclude the EIS.



In February, Hancock submitted an Expression of Interest to the North Queensland Bulk Ports Corporation for preferred developer status for X80 and/or X110 coal terminals at Abbot Point, north of Bowen. This expression of interest is currently under consideration and will see us on the path to developing capacity at Abbot Point to meet Hancock's future requirements.

Hancock has also now moved from Mining Development Lease (MDL) phase, to Mining Lease Application (MLA) phase in relation to its tenements in the Galilee Basin. Hancock has also submitted a proposal to the relevant Government agencies for a bulk sample project as part of the larger mine developments. This proposal is currently under consideration with more detail to be released at an appropriate time.



Work on the necessary EIS documents for the Alpha Coal Project, including the rail and port component, is continuing and the final Terms of Reference for the EIS for the Kevin's Corner Project have now been released. This document can be found at www.hancockcoal.com.au on the publications page.

Hancock Prospecting, through its wholly-owned subsidiaries Hancock Coal and Hancock Galilee, is committed to working closely with the local communities involved in these projects. We remain focused on supporting strong regional growth and positively influencing development across the region.

**HANCOCK COAL PTY LTD**

Level 8, 307 Queen Street, Brisbane Qld 4000

GPO Box 963, Brisbane Qld 4001, Australia

t +61 7 3231 9600 f +61 7 3229 4788

e mail@hancockcoal.com.au web www.hancockcoal.com.au



HCPL Community Update - Barcaldine RC October 09 FINAL



HANCOCK COAL PTY LTD

Hancock Coal Update – Barcaldine Region

Hancock Coal and Hancock Galilee have started 2010 with a number of significant milestones in confirming the development of the Alpha Coal and Kevin's Corner Projects in the Galilee Basin. The projects include development of two adjacent 30 million tonne per annum thermal coal mines, as well as associated port and rail infrastructure. Each mine has an expected life of 30-plus years.

In February 2010, the projects moved into Bankable Feasibility Study (BFS) phase. This work is continuing along with the Environmental Impact Statement (EIS) studies currently being undertaken for the Alpha Coal and Kevin's Corner Projects.



Hancock has submitted to the State Government a comprehensive application for declaration of an Infrastructure Facility of Significance for a 495km rail corridor from the Galilee Basin to Abbot Point. Consultation on this submission is underway through the Department of Infrastructure and Planning until March 22, 2010. This designation status does not affect the need to obtain all environmental and other relevant approvals.

Hancock is also ramping up its work with landowners as it looks to finalise the rail alignment from the mines to port, and conclude the EIS.

Work on the necessary EIS documents for the Alpha Coal Project, including the rail and port component, is continuing and the final Terms of Reference for the EIS for the Kevin's Corner Project have now been released. This document can be found at www.hancockcoal.com.au on the Hancock publications page.



Hancock has also now moved from Mining Development Lease (MDL) phase, to Mining Lease Application (MLA) phase in relation to its tenements in the Galilee Basin.

In February, Hancock submitted an Expression of Interest to the North Queensland Bulk Ports Corporation for preferred developer status for X80 and/or X110 coal terminals at Abbot Point, north of Bowen. This expression of interest is currently under consideration and will see us on the path to developing capacity at Abbot Point to meet Hancock's future requirements.



Hancock Prospecting, through its wholly-owned subsidiaries Hancock Coal and Hancock Galilee, is committed to working closely with the local communities involved in these projects. We remain focused on supporting strong regional growth and positively influencing development across the region.



HANCOCK COAL PTY LTD

Level 8, 307 Queen Street, Brisbane Qld 4000
GPO Box 963, Brisbane Qld 4001, Australia



Hancock Coal Update – Isaac Region

Hancock Coal and Hancock Galilee have started 2010 with a number of significant milestones in confirming the development of the Alpha Coal and Kevin's Corner Projects in the Galilee Basin. The projects include development of two adjacent 30 million tonne per annum thermal coal mines, as well as associated port and rail infrastructure. Each mine has an expected life of 30-plus years.

In February 2010, the projects moved into Bankable Feasibility Study (BFS) phase. This work is continuing along with the Environmental Impact Statement (EIS) studies currently being undertaken for the Alpha Coal and Kevin's Corner Projects.

Hancock has submitted to the State Government a comprehensive application for declaration of an Infrastructure Facility of Significance for a 495km rail corridor from the Galilee Basin to Abbot Point. Consultation on this submission is underway through the Department of Infrastructure and Planning until March 22, 2010. This designation status does not affect the need to obtain all environmental and other relevant approvals.

Hancock is also ramping up its work with landowners as it looks to finalise the rail alignment from the mines to port, and conclude the EIS.

In February, Hancock submitted an Expression of Interest to the North Queensland Bulk Ports Corporation for preferred developer status for X80 and/or X110 coal terminals at Abbot Point, north of Bowen. This expression of interest is currently under consideration and will see us on the path to developing capacity at Abbot Point to meet Hancock's future requirements.

Hancock has also now moved from Mining Development Lease (MDL) phase, to Mining Lease Application (MLA) phase in relation to its tenements in the Galilee Basin.

Work on the necessary EIS documents for the Alpha Coal Project, including the rail and port component, is continuing and the final Terms of Reference for the EIS for the Kevin's Corner Project have now been released. This document can be found at www.hancockcoal.com.au on the Hancock publications page.

Hancock Prospecting, through its wholly-owned subsidiaries Hancock Coal and Hancock Galilee, is committed to working closely with each of the local communities involved in these projects. We remain focused on supporting strong regional growth and positively influencing development across the region.





HCPL Community Update - Barcaldine RC October 09 FINAL.pdf



Hancock Coal Update – Barcaldine Regional Council

Hancock Prospecting is continuing to make significant progress on development of the Alpha Coal Project and the adjacent Kevin's Corner Project in the Galilee Basin.

Hancock Coal Pty Ltd, a subsidiary of the parent company, is continuing to work through the approvals and Environmental Impact Statement (EIS) processes required for the Alpha Coal Project. These processes must meet all necessary requirements to ensure this progress continues as planned.

The EIS for the Alpha Project is well underway and decisions on preferred port locations and rail options are now final. The Alpha and Kevin's Corner Projects will share this port and rail infrastructure over the 30-plus years of mine life. Abbot Point is the preferred port option, consistent with the State Government's plans.

In terms of rail infrastructure, a stand-alone standard gauge rail system from the Galilee Basin to Abbot Point has also recently been selected as the preferred option for which the Environmental Impact Statement is being prepared.

Initial meetings with Council and landholders are occurring, with more planned in the future. A range of factors need to be considered in developing projects of this scale and all relevant evaluations and studies need to meet their required outcomes.

Hancock Coal is committed to working closely with each of the local councils and communities involved during the various stages of project development. The second round of applications for the Hancock Community Support Program is currently being considered, with announcements on support for local community-based organisations to be announced shortly.

By securing this reliable source of high quality thermal coal, Hancock Coal will be supporting employment growth in the region and providing a direct injection into the Queensland economy.



**HCPL Community Update - Isaac RC October 09 FINAL.****HANCOCK COAL PTY LTD****Hancock Coal Update – Isaac Regional Council**

Hancock Prospecting is continuing to make significant progress on development of the Alpha Coal Project and the adjacent Kevin's Corner Project in the Galilee Basin.

The Alpha Coal Project includes development of a 30 million tonnes per annum open-cut coal mine, as well as associated port and rail infrastructure to support the mine. The neighbouring Kevin's Corner Project is similar in scale, with plans for a 30 million tonnes per annum open-cut and underground longwall coal mine.

The projects will share port and rail infrastructure and each has an expected mine life of 30-plus years.

Hancock Coal Pty Ltd, a subsidiary of the parent company, is continuing to work through the approvals and Environmental Impact Statement (EIS) processes required for the Alpha Coal Project. These processes must meet all necessary requirements to ensure progress on the project continues as planned.

In terms of port infrastructure, Abbot Point has been chosen as the preferred port option. This is consistent with the State Government's plans.

A stand-alone standard gauge rail system from the Galilee Basin to Abbot Point has also recently been selected as the preferred option for which an Environmental Impact Statement is being prepared.

Part of this rail infrastructure is planned to be built through Isaac Shire and Hancock Coal will work closely with the local Council and community on this important part of the project. Initial meetings with Council and landholders are occurring, with more planned in the future.

At this stage, a range of factors need to be considered in developing these projects and all relevant evaluations and studies need to meet their required outcomes.

Hancock Coal is committed to working closely with each of the local communities involved. By securing this reliable source of high quality thermal coal, Hancock Coal will be supporting strong employment growth in the region and providing a direct injection into the Queensland economy.





Appendix E HPPL Questionnaire

11. The following voluntary information will help with our demographic studies

- Age:
- ☐ 18 – 30 years
 - ☐ 31 – 45 years
 - ☐ 46 – 60 years
 - ☐ 61 years and over

12. Gender

- ☐ Male
- ☐ Female

If you would like to receive further information about Hancock Coal, Hancock Galilee and the Alpha Coal and Kevin's Corner Projects, please provide your contact details. It is important to note that these details will remain confidential and will be used for the distribution of Hancock information only.

First Name	<input type="text"/>
Surname	<input type="text"/>
Postal Address	<input type="text"/>
	<input type="text"/>
	<input type="text"/>
Email Address	<input type="text"/>

We would like to thank you for taking the time to complete this questionnaire; if you have any questions about this form or the project please contact the project team at the address on the front cover or on (07) 3217 8772

Alpha Coal & Kevin's Corner Projects Questionnaire



Hancock Coal and Hancock Galilee are investigating the opportunity to develop the Alpha Coal and Kevin's Corner Projects, two thermal coal mines in the Galilee Basin, Central Queensland, supported by rail and port facilities.

It is important that we understand your views on the proposed developments and what it could mean for you and your family and the community in which you live.

This feedback form will also help us to gather information on what you value about your area and the potential changes that may result from development of the projects.

We would welcome your input to our plans. Please take the time to fill out this questionnaire and return it in the reply paid envelope to:

SIA Team
Alpha Coal Project
PO Box 2371
Toowoong DC Qld 4066

Your individual comments will remain confidential with the overall results reported in the Environmental Impact Statements for the projects.

1. What would you describe as your local area?

- ☐ Barcaldine
- ☐ Alpha
- ☐ Emerald
- ☐ Clermont
- ☐ Other

2. What do you like about living in this area?

<input type="text"/>
<input type="text"/>
<input type="text"/>
<input type="text"/>

3. What don't you like about living in this area?

<input type="text"/>
<input type="text"/>
<input type="text"/>

4. What are the major issues facing your community currently?

5. Have you heard of Hancock and/or the proposed Alpha Coal and Kevin's Corner Projects? If so, what are your general thoughts about the projects?

6. Would you expect the projects to contribute to the local community?

- ☐ No
☐ Yes - how?

7. Do you think the projects will affect the lifestyle of your community?

- ☐ No
☐ Yes - how?

8. Do you think the projects will have a positive flow on effect to businesses within your community?

- ☐ No
☐ Yes - how?

9. How do you think the proposed projects will affect the following? (please tick one column only)

	Very Positive	Positive	No Effect	Negative	Very Negative	Unsure/ do not know
Community Services						
Education						
Infrastructure						
Roads						
Water						
Health						
Air quality						
Noise						
Power Supply						
Local economy						
Housing						
Recreation activities						
You and your family						
Law and order						
Other - please specify						

10. Do you have any general comments about the projects?
